

# Industrial

31,6x59,2 12.4"x23.3" | Contemporary | Metal

floor tiles/pavimento



Industrial Grafito  
31,6x59,2

PEI-III   
C-890

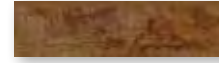


Industrial Grafito Rodapié  
8x31,6 C-630



Industrial Óxido  
31,6x59,2

PEI-III   
C-910



Industrial Óxido Rodapié  
8x31,6 C-630

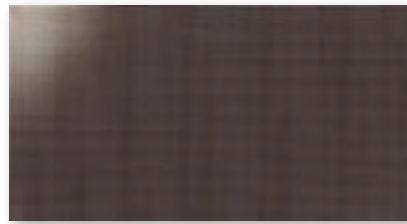
# Look

31,6x59,2 ■ 12.4"x23.3" | Contemporary | Metal



Look Nácar  
31,6x59,2

PEI-IV   
C-910



Look Acero  
31,6x59,2

PEI-IV   
C-915



Look Cobalto  
31,6x59,2

PEI-IV   
C-915

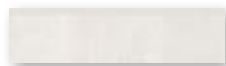
# Rivets

31,6x59,2 ■ 12.4"x23.3" | Contemporary | Metal

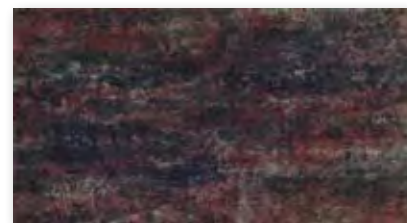


Rivets Nácar  
31,6x59,2

PEI-IV   
C-890



Rivets Nácar Rodapié  
8x31,6 C-630



Rivets Grafito  
31,6x59,2

PEI-III   
C-890



Rivets Grafito Rodapié  
8x31,6 C-630



Rivets Óxido  
31,6x59,2

PEI-III   
C-910



Rivets Óxido Rodapié  
8x31,6 C-630

Packing List p.329

Series	Format	Unit	Boxes Pallet	m <sup>2</sup> Pallet	m <sup>2</sup> Box	Pieces Box	Kg Pallet	Kg Box
Industrial	31,6x59,2	m <sup>2</sup>	48	45,12	0,94	5	1046	21,50
Look	31,6x59,2	m <sup>2</sup>	48	45,12	0,94	5	1046	21,50
Rivets	31,6x59,2	m <sup>2</sup>	48	45,12	0,94	5	1046	21,50