

# Dávide

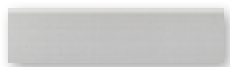
31,6x59,2 ■ 12.4"x23.3" | Contemporary | Metal

floor tiles/pavimento   



Dávide Nácar  
31,6x59,2

PEI-IV



Dávide Nácar Rodapié  
8x31,6

C-630



Dávide Azul  
31,6x59,2

PEI-III



Dávide Azul Rodapié  
8x31,6

C-630



Dávide Visón  
31,6x59,2

PEI-III



Dávide Visón Rodapié  
8x31,6

C-630

# Martello Rectificado

30,5x58,2 ■ 12"x23"

| Contemporary | Metal



Martello Nácar  
30,5x58,2

PEI-IV



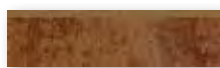
Martello Nácar Rodapié  
8x30,5

C-680



Report Óxido  
30,5x58,2

PEI-III



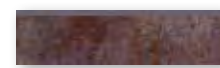
Report Óxido Rodapié  
8x30,5

C-680



Report Grafito  
30,5x58,2

PEI-III



Report Grafito Rodapié  
8x30,5

C-680

Packing List p.329

Series	Format	Unit	Boxes Pallet	m <sup>2</sup> Pallet	m <sup>2</sup> Box	Pieces Box	Kg Pallet	Kg Box
Dávide	31,6x59,2	m <sup>2</sup>	48	45,12	0,94	5	1046	21,50
Martello	30,5x58,2	m <sup>2</sup>	40	42,40	1,06	6	821	20,18